

Autumn 2003  
Issue 14

[www.chelmsfordhc.org.uk](http://www.chelmsfordhc.org.uk)

## Inside this Issue

- 1 Welcome, Chairman's Chatter  
Secretary's Corner
- 2 Treasurer's Report, Sponsorship  
Development News
- 3 Players Committee Report  
Pitch Usage
- 4 Pitch Bookings  
Youth Report
- 5 Stop Press, Training Times  
Men's 1<sup>st</sup> XI Report
- 6 Ladies 1<sup>st</sup> XI Report
- 7 Ladies Club Report  
Mixed Hockey, Summer League
- 8 Forthcoming Events, Role Call..  
Club Announcements
- 9 Letters to the Editors, Feedback  
Fundraising - Fantasy Hockey
- 10 Fundraising - 500 Club  
Latest 500 Club Draw Results
- 11 Social Events
- 12 Golf Day Application Form
- 13 Adverts
- 14 The Printing Place Advert
- 15 500 Club Standing Order  
Mandate

### Newsletter Editors

David Wallbank  
([davidawallbank@hotmail.com](mailto:davidawallbank@hotmail.com))  
Adrian Tuff ([atuff@tiscali.co.uk](mailto:atuff@tiscali.co.uk))  
Nikki Tuff ([nikkituff@tiscali.co.uk](mailto:nikkituff@tiscali.co.uk))

# Chelmsford HC

## NEWSLETTER

## Welcome

### Editors

Here we are at the beginning of an exiting new season with the new pitch looking like a "jewel in the park". And a new look Newsletter, do you approve, all comments / feedback gratefully received. Your contributions when requested will enhance it even further.

Editing is under a fresh team - Tufty and Mrs Tufty and David Wallbank. We would like to pass on our thanks to Rob for his efforts over the past few years.

Good luck to all teams and lets make the Clubhouse your second home! See you there.

## Chairman's Chatter

### Nigel King

Here we go again ..... another season upon us.

Have you noticed any changes at Chelmer Park? I hope so! Some of us 'oldies' went to play a home game a couple of weeks ago and what did we find? – Two all weather pitches. I was on the sand based and looked with admiration at the water based. To those of us who remember six grass pitches at Chelmer Park, worm casts, lakes on pitches, dog #@%?! Saturday morning pitch inspections ..... not all that long ago and now to see what we now have, well, fantastic. A big thank you to all those

involved in seeing the project through.

So, it's not all talk, we do have two all weather pitches on our home ground at last. The changing facilities will be finished in November. What's left for us now? Firstly, get out there and enjoy your facilities, come into the clubhouse before and after your game; secondly, how about supporting other teams before your game; come and watch a First XI game; try mid week training!

Or, do something about the £35,000 still required to complete the fund raising – the 500 Club application form is in at the back of this newsletter, more are available in the Clubhouse, sign up now if you have not already done so and perhaps get your friends, family and work colleagues to have a go ....

Make sure the Bonus Ball squares are all sold each Saturday – it's on the bar! Find new Sponsors or Donors.

Whatever you do it will be appreciated and I wish you all a most enjoyable season.

## Secretary's Corner

### Spencer Wilcox

Season 2003/4 opens a new era for Chelmsford HC with the opening of the new water based pitch and the new changing block well on its way. We have facilities that match the best in the UK – and the new

pitch is at world standard. All this is happening just about 30 years after we moved to Chelmer Park when we were very proud of our 6 new grass pitches! Well done especially to Urs for getting us this far.

The official opening will be at the end of the season in April – but ignore the date in the fixture card for the time being while we sort out one or two unexpected details. We'll confirm the date shortly.

### ***Boring stuff***

Have you moved; got a new tel/mobile; become e-enabled and got an email address? Don't be shy – send me your details or mail me at [spencer@wilcox51.fsnet.co.uk](mailto:spencer@wilcox51.fsnet.co.uk). That's the best way to stay in touch, especially as we see our paper communications reducing. So get wired if you want the newsletter in future!

### ***Help***

We need volunteers to represent the club on the Sports Club committee. It's not onerous – meets once every 6 weeks – but is important to the smooth running of the club. Ask me, Nigel King or Jon Lambert for details. One of the reps needs to sit on the Management Committee. So if you're hungry for power speak now!

### ***Fixture cards***

Make sure you get yours from your captain. S/he has got plenty!

### ***Welcome!***

... to all our new players.

### ***Highlights from the Management Committee***



Since the AGM the main points are:

- The development – see below
- Teas – for this season we have supported the Playing Committee's proposal that everyone has hot teas. In due course these will be served in the (you've guessed it!) tea rooms
- Kit – this season you will see the gradual roll out of the shirts etc the 1st XI's pioneered last season
- Esoteric discussions on where the equipment garage should be re-located to
- Filling officers jobs – of which the sports club reps are the last to sort
- Management of the new facilities - much of the groundwork has been done by the Playing Committee, which Jon Lambert has taken by the scruff of the neck and made to work – he particularly enjoys discussions about training time allocations! Well done, Jon

## **Treasurer's Report**

*Claire Penketh*

A few points to note as we're at the beginning of a new season.

- Firstly can you all make sure you've paid your subs to Sue Dewar by 31 October.
- Secondly can you all make sure you remember to bring your match fees to your game each week to make life easier for your captains.

- Finally, I'm sure you've all had a chance to play



on the new pitch so we ask you all to do as much as you can to help raise the final £35,000 to pay for the pitch and the new pavilion extension.

## **Sponsorship**

Peter Woodward

We will soon be announcing the name of a New Sponsor, but we still need more Sponsors. If there is anybody you know, any Company you know or work for, ask them to sponsor Chelmsford Hockey Club.

We are now a very big and successful club. Help your club and be proud of it!

## **Developments News**

*Spencer Wilcox*

By the time you get this most of you will have played, walked on, admired the new pitch. All teams will get several games on it during the season. Everyone on the email will have had some pointers about using the pitch:

- The pitch keys are in the clubhouse on the key rack - this includes access to the pitch and to the pump room. You will need to have the clubhouse keys of course - arrangements for these are the same as other seasons
- The pitch needs a full water (program 1) before the first

game on Saturdays. Thereafter it will only need a half water (program 2) between games, and not even then in wet or very damp weather

- Your captain or deputy should be the only people to operate the water. But if you have to the instructions to operate the water are in the pump room - they are very simple. But do not touch any equipment in there other than as instructed
- Make sure you and your kit are off the playing area when the watering is in progress
- You must make sure that the pitch is secure when you leave it. Gates must be locked unless you are handing directly over to the next team coming on. Do not leave the pitch unattended with the gate unlocked even for a short while. Its important that all players are vigilant about this.
- Return the keys to the clubhouse or the named keyholder

There are a few snags to sort out with the pitch but nothing major. If you come across problems please let me or any committee member know immediately.

The changing rooms are only slightly behind schedule, but we should be into these by November. These will be solely for hockey use in the winter – so you won't have to use sinks in future where footballers have been washing their boots (not sure what the equivalent in the ladies' changing rooms is?!). This will give us 6 new changing rooms, a physio room, office, club shop and a meeting area.

...which takes me to fund raising.

We are still short of around £35K. We can raise this very easily, and avoid borrowing, if you:

- Make a donation: if every playing member who has not yet contributed gave £300 we would raise £60K
- Join the 500 club at £5 a month – only 180 so far. 500 members would give us £15K net a year
- Find a club sponsor – large or small
- Participate in fund raising events – *especially the Fantasy Hockey League!*

Please take this seriously – don't just ignore it! At the very least join the 500 club – see below – which gives you the chance to win a monthly prize. And get friends and relatives to take part – that costs you nothing

Have a great season.

## Players Committee Report

*Jon Lambert*

With all the changes at the club, the Playing Committee reformed over the summer with the broad remit of 'Playing Issues'. Various items have been sorted out and thanks go to all of those involved.

After plenty of discussion, training times have been agreed and are on the notice board in the clubhouse (as well as in this newsletter). With the high demand on the new pitch timing is tight, please make sure that you start on time vacate the pitch as quickly as possible after your game to give the next team on a chance to water the pitch.

With the increased number of matches at Chelmer Park, we've changed the way that teas are done this season. David Mallion is now catering for both the Men and Ladies and has altered the menu to include hot food during the middle of the day. In due course, we will move through to the Tea rooms to give everyone more space.

Following the successful trial with the 1<sup>st</sup> XI's last season, the new playing shirts will be available from Pete Hollebon within the next couple of weeks for £25. Another kit order will be going in before Christmas, so please give your orders to Pete. A price list is below.

We're looking for a few volunteers to restart the social committee, to organise a few more events, particularly on a Saturday evening in the clubhouse. This shouldn't be an onerous task, and we already have a few volunteers, so please put your name forward.

Finally, the Management and Playing Committees are working hard to improve things at the club on your behalf. If you have any suggestions or dislike (or like!) decisions being made then please let us know. Each of the captains sit on the Playing Committee, so let them know!

|                   |              |     |
|-------------------|--------------|-----|
| Tracksuit Tops    | XXL/XL/L/M/S | £28 |
| Tracksuit Bottoms | XXL/XL/L/M/S | £24 |
| Shorts            | XXL/XL/L/M/S | £12 |
| Socks             | L/M          | £6  |

## Pitch Usage

*Crawford Mckee*

***Where are we all playing this season?***

***Isn't the new pitch excellent!***

We will all get our chances to play on the new pitch and the allocations are based on how the home fixtures permit. For info, please note the stats for allocations for the season, see below, show a good spread across all teams. There are those that benefit also by playing at home on a Saturday with low usage and therefore get an extra allocation. You can also see the totals are largely proportionate between the numbers of teams in each section.

We are of course also trying to maximise our income revenue by renting the Water pitch as much as we can. We own it and we have to pay for it!

All in all I think the Club and the players will benefit from playing all our home games at Chelmer Park no matter which surface we are using.

***Saturday pitch allocation Statistics for 2003/2004.***

| <b><u>Team</u></b>   | <b><u>Water</u></b> | <b><u>Sand</u></b> |
|----------------------|---------------------|--------------------|
| <b><u>Men's</u></b>  |                     |                    |
| 1's                  | 2                   | 0                  |
| 2's                  | 13                  | 0                  |
| 3's                  | 11                  | 1                  |
| 4's                  | 7                   | 5                  |
| 5's                  | 7                   | 5                  |
| 6's                  | 8                   | 4                  |
| Evergreens           | 6                   | 7                  |
| Vets                 | 7                   | 7                  |
| <b><u>Ladies</u></b> |                     |                    |
| 1's                  | 9                   | 0                  |
| 2's                  | 11                  | 0                  |
| 3's                  | 8                   | 3                  |
| 4's                  | 7                   | 4                  |
| 5's                  | 6                   | 3                  |
| <b>Total</b>         | <b>102</b>          | <b>39</b>          |

**Pitch Bookings**

*Crawford Mckee*

***Hire of Water and Sand Artificial Pitches***

In the event of members (Internal Club) or others (External) wishing to reserve either of the artificial pitches, would you please note the following:

For *All Internal Club* reservations of water and/or sand pitches - all bookings must be directed and confirmed through **Crawford Mckee**.

Tel: (01245) 442163

Mobile: 07968 122425 or

e-mail:

[crawfordmckee@blueyonder.co.uk](mailto:crawfordmckee@blueyonder.co.uk)

*Youth Internal* reservations of water and/or sand pitches – first through **Philippa Feldman** who will review and then pass through Crawford.

For *All External* rentals of water and or sand pitches - all bookings through **Dick Goode**.

Tel: (01245) 601419

**Members must not book the sand pitch direct with Chelmsford Borough Council or any other pitch locations on behalf of Chelmsford Hockey Club.**

**Youth Report**

*Hilary Malicka*

Last season was one of the best ever for the Youth section with a record membership and with the U11s girls making it to the National mini-hockey finals at Cannock - a first for the club! They played brilliantly and only

just missed out on the championship, by one point. They won all their matches, apart from a real thriller against the eventual winners, Belper HC. The U19 boys went over to Zevenbergen in June and won the tournament. The links with our Dutch friends are as strong as ever and we hope to invite them over here next spring.

Autumn is always very busy, with girls and boys attending county trials and development sessions all over the county. By the time you read this we will have had our first White Knights mini-league event at Chelmer Park (October 12<sup>th</sup>). Once we are into November the attention moves to the county rounds of the mini-hockey and we are intending to have a strong presence, fielding two teams in each age group.

This season we are moving into Indoor Hockey in a more focused way and hope to enter boys and girls teams for the East U16 and U19 Indoor competitions. We have booked New Hall School Sports Hall every Monday from 6th October until February half term. The session runs from 7.30pm to 8.30pm but we ask that players meet at 7.15pm to warm up so that we can start the training at 7.30 prompt. Each session will cost £2 per player. The boys and girls sessions will alternate each week starting with the girls (i.e. girls start 6th October, boys start 13th October).

The Youth are particularly grateful to all the senior players (old and new!) who have found time to come and help out at coaching sessions. The kids love it and you are such great role models for them. If you feel you are able to come along occasionally and take a few set pieces/demonstrate skills



etc. then please contact either Ian Gall or myself. The training times are listed below. We'd love to have you along.

## Stop Press – Free Kit for Clubs

*Hilary Malicka*

We have recently registered Chelmsford HC on the Kingsmill Bread Kit for Club website!

This is a new initiative where when we buy Kingsmill products (and save the tokens), we can exchange these tokens for various hockey equipment, ranging from balls and training bibs right through to aluminium goals!!

So, please can all members and families save their 'Free Kit for Clubs' tokens from Kingsmill products.

I will put a collection bag in the clubhouse.

<http://www.kingsmillkitforclubs.co.uk>

Thanks.

## Training Times

*Jon Lambert & Hilary Malicka*

There have been some changes to the training times for this season, mainly because of the new water-based astro.

The (current) training times for the 2003/2004 season are as below:

**Ladies 1's** - Tuesdays 19.30 to 21.30 (water)

**Ladies 2's** - Mondays 19.30 to 21.00 (water)

**Ladies Club** - Wednesdays 20.00 to 22.00 (water)

**Men's 1's** - Tuesdays 20.00 to 21.00 (sand) and 21.00 to 22.00

(water) and Thursdays 20.00 to 22.00 (water)

**Men's 2's** - Thursday's 19.30 to 21.00 (water)

**Men's Club** - Wednesdays 20.30 to 22.00 (water)



### Youth

All U9's - Sunday's 09.00 to 10.00

All U11's - Sunday's 09.45 to 11.30

All U13's - Sunday's 09.45 to 11.30

U14/U18 Boys – Tuesday's 18.30 to 20.00

U14/U15 Girls – Wednesday's 18.30 to 20.00

U19 Girls/Club – Wednesday's 20.00 to 21.30

## Men's First XI Report

*Andrew 'Spesh' Kennedy*

Yet again you are going to have to put up with me for another season, writing some inane drivel for you to read before each home match.

I am now entering my 7th season with Chelmsford 1st XI and my 6th as captain, and during that time I have seen over 75 players making an appearance in an EHL game for the 1st XI. I am glad to say - touch wood - that I haven't missed a single game as yet, and I hope to continue at least until the end of this season.

Last season we finished 5th in Division One, although had we disposed of some of the weaker sides in crucial away fixtures

either side of Christmas we would have ended up 2nd in the play off position. We reached round five of the HA cup but lost in disappointing fashion to Brooklands. We as a 1st XI realise we need to improve on this for the new season and have done a lot behind the scenes to try and achieve this.

2003/2004 is turning into a hugely important season for Chelmsford Hockey Club. Our new water based is in place and all reports to date from players, members and opposition have all been highly complimentary on the quality of the surface. In addition, this season the EHL is undergoing a major, radical restructuring. The bottom line is that we must finish in the top 2 of EHL Division One this season to be promoted to the EHL Premier Division. If we finish lower than 2nd we go into the National South Division which will include roughly all clubs South of Milton Keynes from EHL Divisions 1 and 2.

Clearly our aim is to attain Premier Division Status, especially as this season we now have the facilities and the players to achieve this.

Due to this ambition to get to the top level of English Hockey, we are trying to become a much more professional unit. Our management team now has 5 members - Peter Carter (Administration), Peter Woodward (Match-day Manager / EHL liaison), David Kitchiner (Pitch-side Manager / Assistant Coach), Craig Fulton (Player/Coach) and myself. We have also obtained the services of a newly qualified Sports Physiotherapist in Steve Morley, who will look after all those little tweaks and strains during training and on match days.

Another person that mustn't be forgotten is Club patron Alan Draper, who is still actively involved in the Men's 1st XI and will continue to make those flights into Stansted from Ireland to support us whenever he can.

On the playing front, for the first time in 5 seasons we have had very little turn around. We have only lost 2 of last seasons squad, but at the same time have gained numerous players of 1st and 2nd XI standard to make us potentially a very strong unit. Our losses have been David Viney and Stuart Gower-Jackson who have both returned to South Africa. Marc Oelofse (South Africa U21's), James Davis (Western Province) and Chris Broom (Western Australia U21's) join us from Pretoria, Cape Town and Perth respectively.

Olly Cooper, Ian Belchamber and Phil Wilkinson all return after their studies at the mighty Loughborough University and Phil Pineo joins from Crostyx. We will also be looking to youngsters Luke and Josh Mephram and Matt Bell to make a big impression on the squad this season.

Thankfully, Craig 'Ned' Fulton returns for his 4th season as coach. As a club we are so happy that Ned and Nat will be getting married on December 6th and we wish them all the best for their future together. Over past seasons Ned has been instrumental in putting Chelmsford Hockey Club on the map and so nearly gaining us promotion to the Premier League in 2001, lets hope we can go one better this year.

As a club everything continues to be focussed around the Water-Based Astro Fundraising Appeal.

This is still critical to the success of a club of our size, and as a 1st XI we are lending a hand in every way possible. Once again back by popular demand, we will be selling a Chelmsford Men's (and hopefully Ladies?) 1st XI 2004 Calendar in December - any themes or ideas for poses - please speak to the artistic expert and designer - Dave De Prez!.

## Ladies First XI Report

*Janet Sutton*

Ladies 1st XI make their debut on the new pitch at Chelmer Park on 1st November v. Olton at 2.00pm. **SPECTATORS PLEASE !**

Hopefully by that time this goes to press, we will still be in a strong position having made a 100% start in our first two games.

Having travelled well round the country, we are the only team to have won our first two games in the Premiership. Leicester 2-1, and Doncaster 3-2. At Clifton we only managed a draw but this was enough to keep us top of the table, on goal difference.

Goalkeeper, Katy Roberts, is away with GB in USA for the Four Nations Tournament in preparation for the Olympics and Shelley Haslam proved an able substitute in the win over Doncaster, and Lynsey Warren is training well. We are unsure what Katy's availability will be on her return as GB have a structured training programme leading up to the Olympics in Athens.

Posh and Bex (!) have finished their studies at Loughborough and

are back in the Chelmsford starting line up and Sarah Wilcox has returned to Loughborough, after a placement year back in Chelmsford.

Youngsters Sarah Bolton, Libby Knifton and Anna Smith join the training squad and Anna has travelled with the squad to Doncaster. The squad has taken on a nice blend of youth and experience. The reliable and mature members of the squad, including Lynn Bollington, Tracey Comber and Tracy Wilmore continue to inspire those around them as the youngsters don't want to be shown up by their elders!

Lisa Wooding has taken over the reins as Captain and is ably assisted by Maria Merrigan as Vice.

Karen Brown continues as coach and hopes that the progress which has been made in her first two seasons will continue and a top 4 spot is her target. This year she has a larger squad to work with which will be useful as some players are unavailable at certain times of the season. This has already proved crucial with Hayley Heggie playing her first full league game against Doncaster ably deputizing for Harriet Miller.

Lisa Wooding, Cath Gilliat-Smith and Chloe Rogers are training at Bisham with the England squad on a regular weekly basis.

All bodes well for a promising season on the new pitch. Many thanks to Urs for all her efforts masterminding its' fruition.

## Ladies Club Report

*Jenny Stonebank and Nikki Tuff*

Firstly, a big welcome to all new arrivals to Chelmsford this year, fortunately for the selection committee, too many to mention individually.

The season so far:

The 1st XI won their opening games against Leicester 2 -1 and Doncaster 3 - 2 and drew the third. They are currently top of the league!

2nd XI have started their campaign in the East Div. 2 with two 2 - 2 draws and a long awaited win.

3rd XI have won one game and lost two.

4th XI who are in the same division as the 3rd XI, Essex Div.1 have lost all their games so far this season but morale remains high.

5th XI started their season with a 2 - 1 win over Thurrock 3rd XI and a draw against Upminster.

The Under 19 girls had a resounding victory in their first game in Essex Div. 1 of the Under 19 league, beating Colchester 7 - 0, Sally Dewar netting her first hat-trick of the season. We have a strong representation of girls throughout the Youth entering Essex trials, our best wishes to all of those involved.

Baby News – Congratulations to Susi Stacey on the birth of Samantha, Pam Ebdon on the birth of Thomas and Nikki Tuff on the birth of Mollie.

We are always on the lookout for new blood *at all levels*, so if you know of any friends, relatives or

colleagues who might be interested in giving hockey a go, bring them along or contact us for details.

## Mixed Hockey

*Adrian Tuff*

This season we have set up a mixed team, besides entering the HA Mixed 'Timpson' Trophy we have organised a number of home (and potentially some away) friendlies on Sundays.

If you are interested in playing, either occasionally or regularly, then either put your name down on the form on the clubhouse noticeboard or speak to me directly.

*Fixtures:*

9 Nov Hounslow & Ealing  
Home 2.30pm Water

30 Nov Norwich Union  
Home 2.30pm Water

25 Jan Saffron Walden (Cup)  
Away

29 Feb Shefford & Sandy  
Home 4pm Water

## Summer League

*Claire Penketh and Simon King*

### Ladies

Summer League at Old Lought's proved very popular this year with more than 20 players available for most matches.

After introducing several new players to join us, we stormed through the competition winning most of our games.

By our last match, the result didn't matter as we'd already done enough to win the league.

Chelmsford have got their name back on the shield again this year.

Many thanks go to Janet Sutton who umpired every one of our games.

### Men

I would like to thank all those who played for the 1's this summer; it was an enjoyable and most successful summer season. This was reflected in the fact that we had on average 14 players every week, with 4/5 students and 1 spectator (Mr Dan Tilley GK).

We had good mix of players from top 3 teams, notably the 3rd's, providing not only superb firepower in the Dee but also some awesome defending.

My thanks go to Stumpy for not only playing but reffing, coaching, stepping to one side to let others play and blocking us all for the occasional lack of determination to get a result. Also thanks to Bruiser for his support on and off the park, even when behind the goal during a game!

We slipped up against the old Chelmsford rival, Little Baddow, unfortunately hockey suffered as we were drawn into their petty little world of winge!! Why hasn't someone seen the light yet??

Our final record was as follows:

Played 14  
Won 12, Drawn 1, Lost 1  
Goals Scored 102, Conceded 27,  
Goal Difference +75  
Points 37 – Champions

The 2<sup>nd</sup> placed team was Havering with 32 points and Maldon & Little Baddow were 3<sup>rd</sup> with 26 points.

## Forthcoming Events

Saturday 29<sup>th</sup> November

**Whisky Night** (see advert below)

Friday 23<sup>rd</sup> to Sunday 25<sup>th</sup> January

**Annual Beer Festival**

Saturday 24<sup>th</sup> January

**Winter Hockey Newsletter**

Saturday 7<sup>th</sup> February

**Quiz Night**

Friday 19<sup>th</sup> March

**Men's Annual Dinner** 7.00pm

Friday 2<sup>nd</sup> April

**Ladies Night**

Saturday 3<sup>rd</sup> April

**Club Day**

Saturday 24<sup>th</sup> April

**Spring Hockey Newsletter**

Monday 10<sup>th</sup> May

**Golf Day** (See advert below)

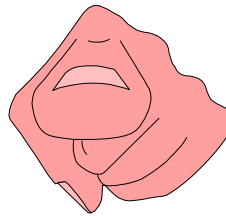
Friday 25<sup>th</sup> June

**Hockey Club AGM** 8.00pm

## Role Call...

*Your Hockey Club Needs You....*

Are you a social animal? Want to get more involved with the club?



We are in desperate need of some volunteers to form a social committee.

If you feel that you might be interested in organising and promoting hockey club social events then please speak to Spencer Wilcox or Jon Lambert.

We are always on the lookout for club members who would like to get more involved with the club, at all levels.

From helping behind the bar to assisting the youth section, but most importantly of all (at the moment) we desperately need members to represent the hockey club on the Sports Club committee. If you feel you would like to be more involved then please talk to Spencer Wilcox or Jon Lambert.

### *What is The Sports Club?*

Well, it exists to provide bar, catering, social facilities and to ensure that security is maintained for Chelmsford Cricket Club and Chelmsford Hockey Club. The Sports Club Committee consists of six members from each club.

At present we are represented by: Jackie Hefford, Gill Hickman, Nigel King, Jon Lambert, David Wallbank and Sally Willford. Any member wishing to serve on this committee would they please speak to a management Committee member.

## Club Announcements...

A quick round-up of announcements from around the club:

As some of you will be aware, Nikki and Adrian Tuff had a baby girl, Mollie Mabel, on the 18<sup>th</sup> June 2003.

Tom and Emma Burrows are expecting their second child in the new year, and Sarah Bowerman (neé Smith) is expecting her first baby in the new year.

A few of our numbers tied the knot over the summer:

Congratulations to Derek and Sophie Gould who got married at Leez Priory in June, and to Rob and Jo Gemmill (the 6<sup>th</sup> XI incidentally bought them, amongst other presents, a rolling pin!).

You will also all be pleased to hear that Guy Hollebon and Becky recently got engaged (in St Marks Square, Venice) and a proud father is already planning for a wedding late next year.

Some of you will remember Doug Mason - one of our VPs. Sadly he died in September at the age of 90 having given great service to hockey over many years, especially as an umpire.



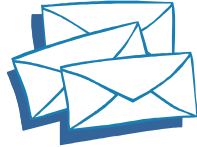


## Letters to the Editors

If you have any burning issues that you feel you want to convey to the rest of the club and/or management officials, but do not know the best way to do it, why not write a Letter to the Editors?

All letters will be treated with the utmost importance and in the strictest of confidence (if necessary!).

We are awaiting your input.



## Feedback

Along with any Letters to the Editors that you feel you may want to write, now that you've had a chance to read it through, do you have any ideas concerning the Newsletter?

All feedback gratefully received.

*How often (and when) would you like the Newsletters published?*

*What information / articles do you want to appear in the newsletters?*

*Do you approve of the new style?*

*Are there any changes that you would make?*

You can either accost one of the Editors in the clubhouse, email them your ideas (email addresses are on the first page) or snail mail your ideas to the Tuffs:

57 Sheppard Drive  
Chelmsford  
Essex  
CM2 6QE

## Fundraising - Fantasy Hockey

*Adrian Tuff*

After a pretty successful 2002/2003 season Fantasy Hockey makes a welcome comeback to Chelmsford Hockey Club. Last season we managed to raise around £750 for the new developments, this season we are hoping to break the £1,000 barrier.

To do this we need more people to enter (more) teams and for team managers to make use of the *Christmas Transfer Window* (more details below). This fulfils the dual purpose of making the Fantasy Hockey more interesting for the participants whilst adding much needed funds to the development coffers!

The successful managers of the first placed teams in each league (Men's and Ladies) will receive free subs for the following season (or £100 cash alternative).

The team managers placed second and third will receive bar vouchers, the amounts will be determined after the number of teams has been finalised, last year the amounts were £40 for 2<sup>nd</sup> place and £20 for 3<sup>rd</sup> place.

As with last year there has been high levels of interest in the clubhouse, and also on the website (<http://home.freeuk.com/atuff>) judging by the number of unique hits and teams already entered.

There are a few rule changes this season, the 3 main ones are outlined below:

- 1) You get additional 'club' points for umpiring league (or Evergreen's) games,
- 2) Goalkeepers can only lose a maximum of 5 points goals conceded (last year it was one for each goal), and
- 3) You are able to make up to 3 transfers, the transfer window is Saturday 13th December 2003 to Sunday 24th January 2004 (each transfer costs £2).

As only a handful of games have been played so far this season, the tables are yet to really take form.

Once all of the weekend's results have been processed the tables will appear on the website during the week, and on the noticeboard and clubhouse PC the following weekend.

Many Thanks to all of the people who have assisted in getting Fantasy Hockey running again this year, and a special mention goes to all of the people who fill in the weekly results forms without fail each weekend.

**So what are you waiting for? Enter your Fantasy Team now. The closing date for team registrations is Sunday 2<sup>nd</sup> November.**

## Fundraising - 500 Club

*Peter Woodward*

We already have in existence a “200 Club” with a £5 per month ticket organised by Peter Woodward. By increasing the “200 Club” to a “500 Club” or even a “1,000 Club” the major part of the fund-raising effort could be satisfied immediately.

This enlarged “500 Club” will be finite. The proposed monthly draw will take place on or about the last Saturday of every month commencing March 2003, and ending with the draw in February 2006.

The prize fund calculations are based as follows:

### Monthly Prize Draw:

1<sup>st</sup> 12% of Monthly subscriptions  
2<sup>nd</sup> 8%  
3<sup>rd</sup> 4%  
4<sup>th</sup> 2% x 6 winners

### Quarterly Prize Draw:

May 7% of quarter's subscriptions  
Aug 7%  
Nov 10%  
Feb 7%

If therefore, all members with say 3 or 4 friends contributed £5 per month each, you would be making a very valuable contribution to our fund-raising effort, and at the same time give yourself the chance to win a **handsome monthly and / or quarterly cash prize**. You can clearly conclude how successful this venture will be in raising the capital sum required and giving our Club a cash flow advantage for the duration.

PLEASE RETURN THE ATTACHED FORM TO **PETER WOODWARD** BY POST AT HIS ADDRESS AS SHOWN ON THE APPLICATION FORM. THANKING YOU IN ADVANCE FOR YOUR URGENT SUPPORT IN THIS VENTURE.

## Latest 500 Club Draw Results – August and September 2003

*Peter Woodward*

Currently we hover around the 180 mark of members of the 500 CLUB. After an enormous amount of work, especially by Nigel King, sending out 4 copies of the Standing Order Mandate to each member to sell to friends and relations,. We only gained another 90 Members from 1200 forms! We had about 90 beforehand.

We still need to find £35,000, so fill in the form, return it to me, and you will be doing your bit for the club. Then, go out and sell some more!

| Prize                    | %   | Draw 24<br>Sep 2003 | 182 qualifying members  | Draw 23<br>Aug 2003 | 184 qualifying members  |
|--------------------------|-----|---------------------|---|---------------------|---|
| 1st Prize                | 12% | £109.20             | P.J. Merrigan   | £110.40             | A. Hibbert  |
| 2nd Prize                | 8%  | £72.80              | Steve Paddon  | £73.80              | Olive Nicks   |
| 3rd Prize                | 4%  | £36.40              | Mark Butterworth  | £36.80              | Bill Greenwood  |
| 4th Prize                | 2%  | £18.20              | Mrs. S. King, David Simms,<br>Karen Brown, D.M. & S.L. Fergus,<br>N.G. King, Mr. A.J. Hibbert | £18.40              | Herbert Clarke, Sheila King,<br>C.D. Chalk, Roger Prowting,<br>Janet Sutton, Mike Pidgeon |
| Quarterly<br>Bonus Prize | 7%  |                     |   | £64.40              | Tracey Dowling  |

## Social Events

### MALT WHISKY TASTING

**SATURDAY 29th NOVEMBER  
STARTING @ 8.00pm**

There will be a **BUFFET** during the evening,  
along with a **RAFFLE** and an **AUCTION**.

**SEE IAN HUNTER OR  
NIGEL KING FOR TICKETS**

**OVER 18's ONLY**

**£25 TASTING & BUFFET**

**Whiskies to be tasted are:**



LOWLAND - BLADNOCH  
ISLAY - LAGAVULIN  
ISLAND – ARRAN  
SPEYSIDE – DALWHINNIE  
ISLAND - LEDAIG

**£6 BUFFET ONLY**

---

### CHELMSFORD HOCKEY CLUB

## GOLF DAY



**MONDAY 10<sup>th</sup> MAY 2004  
CHANNELS GOLF CLUB  
LITTLE WALTHAM, CHELMSFORD**

Cost – same as last year. £60 for the day that will include coffee on arrival, lunch and evening meal.  
Two rounds of golf over 27 holes. All profits will go to the Club.

**To ensure your place or that of your team, would you please contact or submit an entry form, which  
can be found in this Newsletter, to either Ben or Ursula without delay.**

**Ben Farmer**, 43 Lawling Avenue, Heybridge, Essex CM9 4YT  
(H) 01621 855826 (M) 07977 539963 e.mail: [ben.farmer@tiscali.co.uk](mailto:ben.farmer@tiscali.co.uk)

**Ursula Heelis**, 24 Harrow Way, Great Baddow, Chelmsford, Essex CM2 7AU  
(H) 01245 477470 (M) 07909 994384 e-mail: [ursula@uheelis.freemove.co.uk](mailto:ursula@uheelis.freemove.co.uk)

## CHELMSFORD HOCKEY CLUB

GOLF DAY – MONDAY 10<sup>th</sup> MAY 2004

CHANNELS GOLF CLUB, LITTLE WALTHAM, CHELMSFORD

**Open to all golfers - Ladies, Gentlemen, Youth - and Guests are most welcome. The greater the number, the better the day. The greater the number, the lower the cost. The greater the number, the more sponsorship for the Club**

### Programme

Coffee on arrival 9.00am

9 Holes - *Belsteads Course* – Texas Scramble, Team Prize

Lunch 12.30pm

18 Holes – *Channels Course* – Stableford, Individual & Team Prize + Longest Drive & Nearest the Pin.

Three Course Dinner, (Gentlemen jacket & tie please) followed by an award ceremony and raffle.

Cost £60 pp. This will depend a lot on the number of entrants and the deal we can make. Sponsorship of prizes would be appreciated.

**Remember this is a fund raising event with all profits going to the Club.**

---

## CHELMSFORD HOCKEY CLUB

GOLF DAY – MONDAY 10<sup>th</sup> MAY 2004

CHANNELS GOLF CLUB, LITTLE WALTHAM, CHELMSFORD

**The organisers need to know the number of competitors by the 27<sup>th</sup> March 2004. Please submit this form with your team or phone either Ben or Ursula**

Name: .....Handicap: .....

Name: .....Handicap: .....

Name: .....Handicap: .....

Name: .....Handicap: .....

Please enter my name or team for the above Golf day.

Ben Farmer,  
43 Lawling Avenue, Heybridge, Essex, CM9 4YT  
(H) 01621 855826 (M) 07977 539963  
e-mail: [ben.farmer@tiscali.co.uk](mailto:ben.farmer@tiscali.co.uk)

Signed: .....

Ursula Heelis,  
24 Harrow Way, Great Baddow, Chelmsford, Essex, CM2 7AU  
(H) 01245 477470 (M) 07909 994384  
e-mail: [ursula@uheelis.freemove.co.uk](mailto:ursula@uheelis.freemove.co.uk)



## Adverts

# Horse & Groom

**Dave & Lyn Lovejoy**

Galleywood Common  
Chelmsford Essex CM2 8PL  
Phone 01245 261653

**GOOD FOOD & ALES  
FAMILY ROOM  
GARDEN**

**PARTIES CATERED FOR**

**Lunchtimes and Evenings –  
Monday to Saturday**

## Club Home Page on the Internet

[www.chelmsfordhc.org.uk](http://www.chelmsfordhc.org.uk)

For the latest information on all aspects of Chelmsford Hockey Club, please visit this site for up to the minute news.

This site also contains a copy of the most recent Newsletter.

Should any member have any interesting information or reports during the season, David (Kitch) Kitchiner would like to hear from you for immediate release on the site, not forgetting to also pass these to the Newsletter editors for release to those without access to the internet.

All Men's and Ladies fixtures for the 2003/2004 Season  
can be found on the FixturesLive Website.

[www.fixs.co.uk](http://www.fixs.co.uk)



**FixturesLive**

The toolkit for sports clubs and leagues

## Advert

Many Thanks to *The Printing Place* for their continued support of this Newsletter

**The  
PRINTING  
PLACE Ltd...**  are pleased to sponsor

# CHELMSFORD HOCKEY CLUB

|                            |             |
|----------------------------|-------------|
| PC/Mac bureau services     | Magazines   |
| Creative design studio     | Brochures   |
| Full colour litho printing | Catalogues  |
| Digital printing           | Newsletters |
| Repro services             | Leaflets    |
| Finishing                  | Folders     |
| Signage                    |             |

**The  
PRINTING  
PLACE Ltd...**  **High Quality Design and  
Print for over 20 years**

Hanbury Road, Widford Industrial Estate, Chelmsford, Essex CM1 3SZ  
Telephone: (01245) 251001 Facsimile: (01245) 267393  
e-mail: [colour@printingplace.co.uk](mailto:colour@printingplace.co.uk)  
Website: <http://www.printingplace.co.uk>

# 500 Club Standing Order Mandate

Please pay: -

**LLOYDS BANK PLC      CHELMSFORD BRANCH      SORT CODE 30-91-85**

**TO THE CREDIT OF: -**

CHELMSFORD HOCKEY CLUB ACCOUNT NO 0997023

The sum of £.....

Amount in words.....  
(Minimum £5-00 per month)

Commencing ..... And on the 7<sup>th</sup> day of every month

Account to be debited:-

Your name.....

Your Bank's Title.....

Your Bank code.....

Your account number.....

Your Banks Address.....

.....

Signature (s).....

.....

Date.....

Please return the form to: -

Peter D Woodward,  
Torc Cottage,  
3 Garden End,  
Stock,  
Ingatestone,  
Essex  
CM4 9LD.

You may copy this to pass on to other prospective members.